



### AP640

### 802.11ax WiFi6 Dual-Band Wireless Cloud-based Access Point

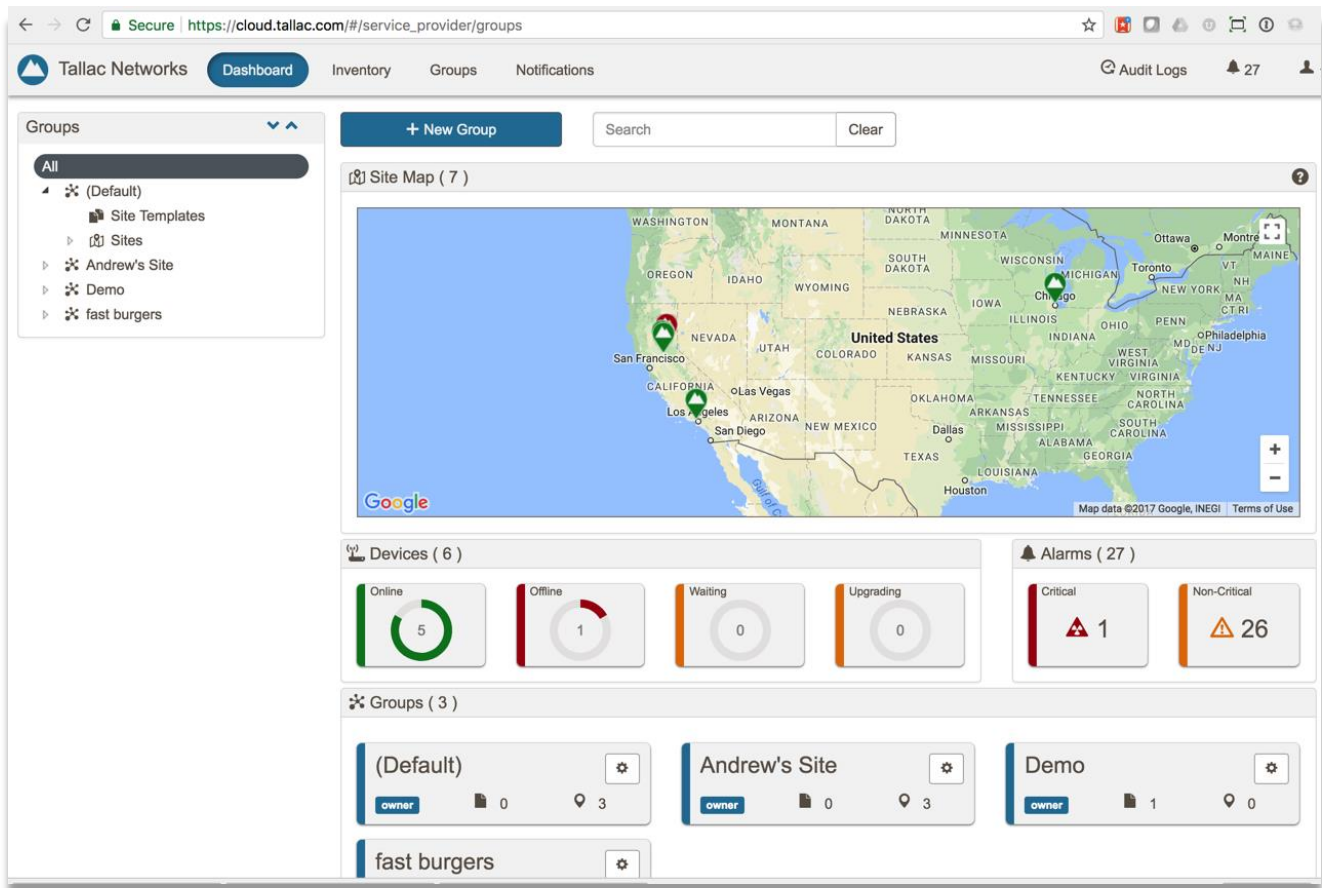


#### Product Overview

The Tallac AP640 is a cloud-based indoor 802.11ax (WiFi6) dual-band, dual-radio enterprise WiFi6 access point with 4 X 4 MIMO that provides cost effective, secure, seamless wireless connectivity. Enterprise WiFi 6 is up to 70% faster than WiFi5 and provides better support for streaming, videoconferencing, collaboration, and IoT devices. The AP640 provides advanced security capabilities in addition to OFDMA, OpenMesh and OpenRoaming. Additional network interfaces (1 X 2.5G Ethernet uplink port, 1 X 2.5G Ethernet LAN port, 2 X USB ports, and a console port) are provided for additional LAN connectivity and capabilities. The AP640 has five built in antennas and also includes a mounting kit.

#### Key Highlights

- Supports concurrent Dual-Band 2.4GHz & 5GHz
- 802.11ax 4X4 MIMO supporting up to 2.9Gbps aggregated data rate
- Supports up to 32 ESSIDs
- Enterprise advanced wireless security capabilities
- Equipped with Bluetooth Low Energy (BLE) and ZigBee
- 802.3at Power over Ethernet (PoE)
- Robust cloud management and Zero Touch Provisioning via Tallac Cloud Management



### AP620

### 802.11ax WiFi6 Dual-Band Wireless Cloud-based Access Point



#### Key Features:

Wireless & Network	Security
<ul style="list-style-type: none"> <li>- 802.11 k/r</li> <li>- Orthogonal Frequency Division Multiple Access (OFDMA)</li> <li>- Client Isolation</li> <li>- OpenMesh</li> <li>- Spanning Tree Protocol (STP)</li> <li>- Dynamic Host Configuration Protocol (DHCP)</li> <li>- 802.1q and RSSI Threshold (Optimal Client Filtering - QoS)</li> <li>- Network Address Translation (NAT)</li> <li>- Dynamic VLAN</li> <li>- Link Layer Discovery Protocol (LLDP)</li> <li>- Dynamic channel selection</li> <li>- Band steering</li> <li>- Seamless fast roaming</li> <li>- Airtime fairness</li> <li>- OpenRoaming</li> <li>- Port forwarding</li> <li>- 802.11U/Hotspot 2.0</li> <li>- 802.1q/DSCP</li> </ul>	<ul style="list-style-type: none"> <li>- Access Control Lists (ACLs)</li> <li>- WPA-Personal (AES)</li> <li>- WPA - Enterprise (AES)</li> <li>- WPA2 - Personal (AES)</li> <li>- WPA2 -Enterprise (AES)</li> <li>- WPA3 - Personal (AES)</li> <li>- WPA3 - Personal Transition (AES)</li> <li>- WPA3 - Enterprise (AES)</li> <li>- WPA3 - Enterprise transition (AES)</li> <li>- 802.1x authentication</li> <li>- Configurable Trusted Wireless Interfaces</li> <li>- Station isolation</li> <li>- MAC address authentication</li> <li>- 802.11i</li> <li>- L2 Firewall</li> </ul>
Management	Other
<ul style="list-style-type: none"> <li>- Tallac Cloud Management</li> <li>- SNMP v2c</li> <li>- SSH</li> <li>- Network Time Protocol</li> <li>- QR Code Onboarding</li> <li>- Remote Syslog</li> <li>- Wireless statistics, usage and alerts</li> <li>- Zero touch provisioning</li> <li>- Multitenant cloud management</li> <li>- Configurable management user access and privileges</li> </ul>	<ul style="list-style-type: none"> <li>- Bluetooth Low Energy (BLE)</li> <li>- ZigBee</li> <li>- iBeacon</li> <li>- Five integrated Antennas</li> <li>- Mounting kit included</li> </ul>



# Tallac Networks

## Tallac SD-LAN Datasheet

### AP640 Product Specifications

#### Physical Features

- Uplink: 1 X 10/100/1000/2.5GBASE-T Ethernet, Auto MDIX, RJ-45 port with 802.3at compliant Power over Ethernet (PoE) support
- LAN Ports: 1 X 10/100/1000/2.5GBASE-T Ethernet Auto MDIX RJ-45 port
- Console: 1 X RJ-45 port
- USB: 2 X USB 2.0 ports
- Four LEDs: Uplink, 2.4G WiFi, 5G-WiFi, Power
- Five built in antennas: 4 X 2.4GHz & 5GHz, 1 X Bluetooth Low Energy; Gain: 3dBi (2.4GHz), 5 dBi (5GHz), 3 dBi (BLE)
- PoE 802.3at compliant (PoE injector not included)
- Physical Dimensions: 19.5 cm x 20.1 cm x 3.98 cm (W x D x H)
- Weight: .7 kg (1.54lbs)
- Wall/Ceiling/T-bar mounting kit included
- Secure AP Mounting mechanisms

#### Wireless Features

802.11ax (WiFi6)  
Concurrent dual-band 2.4 + 5GHz  
Orthogonal Frequency Division Multiple Access (OFDMA)  
802.11 k/r  
OpenMesh  
OpenRoaming  
Seamless Fast Roaming  
Airtime Fairness  
Dynamic Channel Selection  
802.11U/Hotspot 2.0  
Target Wake Time (TWT)  
Basic Service Set (BSS) Coloring  
Client Isolation  
Radio Chains: 2.4GHz: 2 X 2; 5GHz: 4 X 4  
Spatial Streams:  
2.4GHz: 2; MU-MIMO support  
5GHz: 4; MU-MIMO support  
Aggregate Conducted Transmit Power: 2.4GHz: 23dBm, 5GHz: 26dBm  
(Aggregates across MIMO chains and does not include antenna gain)  
Channelization:  
2.4GHz: 20 / 40 MHz  
5GHz: 20 / 40 / 80MHz  
Frequency Band: 2.400 – 2.483 GHz, 5.150 – 5.850 GHz  
Operating Channels: 2.4GHz: 1-11 (US), 1-13 (Europe), 1-13 (Japan);  
5GHz: 36-165 (US), 36-140 (Europe), 36-144 (Japan))  
ESSIDs: Up to 16 per radio (32 total)

#### Network

Spanning Tree Protocol (STP)  
Dynamic Host Configuration Protocol (DHCP)  
802.1q  
IPv4 & IPv6 Compatible  
Access Control List (ACL)  
Network Address Translation (NAT)  
Port Forwarding  
Dynamic VLAN  
Network Time Protocol (NTP)  
Management by Tallac Cloud  
Web User Interface (HTTP/HTTPS)  
iBeacon support

#### Performance

Up to 574 Mbps (2.4GHz)  
Up to 2400 Mbps (5GHz)

#### QoS

Wireless QoS (802.11e/WMM)  
Multicast to Unicast Conversion

#### Security

802.11i  
WPA-Personal (AES)  
WPA-Enterprise (AES)  
WPA2-Personal (AES)  
WPA2-Enterprise (AES)  
WPA3-Personal (AES)  
WPA3-Enterprise (AES)  
MAC Address Authentication  
802.1X Authentication  
Firewall  
SSH

#### Antenna

Type: 5 x Built-in antennas (4 x 2.4GHz & 5GHz),  
1 x Bluetooth Low Energy)

#### Regulatory Compliance

FCC  
CE  
NCC  
BSMI  
VCCI  
TELEC, JATE, IC, C-Tick, Phillipines, Thailand

#### Physical Dimensions

Dimensions: 19.5cm x 20.1cm x 3.98 cm (W x D x H)  
Weight: 0.7 kg (1.54 lb)

#### Power

DC Input: 12V / 2.0A (Power adapter included)  
PoE: 802.3at compliant (PoE injector not included)  
Power Consumption: 25W maximum

#### Environmental Conditions

Operating Temperature: 0°C (32° F) to 50°C (122° F)  
Operating Humidity: 5% to 95% non-condensing

#### Warranty

3 years