







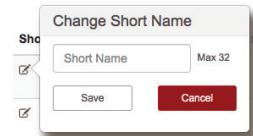
Congratulations on choosing the Tallac SD-BRANCH ECP100-5P

1. Create an new account at cloud.tallac.com, be sure to click on the confirmation email to complete your registration and login to cloud.tallac.com.
2. Use the  button at the top of the home page to create your first site.
3. Navigate to devices from the left-hand menu and use the  button to add your ECP100-5P by entering the serial number that begins with EC followed by 10 numbers, example EC1828000501.
4. Power on your ECP100-5P with an ethernet cable connected to any of the ethernet ports. Make sure that the device will receive a DHCP address and can reach the internet.

5. After a few minutes, the device status will change to “Online”.
6. Navigate to the “Devices” view in the left-hand menu and select the  tab and make sure the device has the most current firmware.
7. Your ECP100-5P is now ready to use.

Recommended first configuration tips

Gateway & DHCP If you would like the ECP100-5P to be your gateway please follow the guide at www.tallac.com/support.

Ports You can enable, disable and assign friendly names to the four Ethernet ports and USB ports. Click on the pencil/tablet icon to add a friendly name. The ports view controls the networking functions of the ethernet and USB ports, the power portion of the POE port is controlled from the Power tab.



Power You can enable, disable, add friendly names and manually initiate power cycles from the power tab. The power ‘cycle time’ is defaulted to 15 seconds, this is the wait duration between power off and power on.

Rules There are two standard automations, and the ability to add custom automations.

(1) Automated WAN reboot. This rule will reboot the broadband modem and router when the internet connection has been lost. Wait times, Retrys and Alerts are user definable.

Continued...



(2) WAN failover to LTE The rule will monitor the primary broadband connection and if it becomes unavailable will divert internet traffic to the USB modem. Includes the ability to select specific business critical traffic to failover to LTE. Please refer to ECP100-5P datasheet for compatible USB LTE modems from Verizon and AT&T.

(3) Custom Automations allow you to schedule actions that can apply to one or more AC/Ethernet/USB ports that include power on, power off and power cycle, which can be repeated on one or more days of the week.

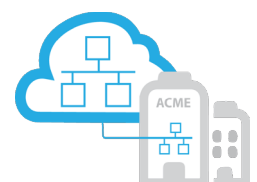
(a) Custom Power Schedules – allows you to quickly configure ongoing power reboot schedules for ongoing network health.

(b) Custom Monitoring Rules – provides the ability to set customized rules and automated actions for Ping or HTTP tests for any port in addition to allowing easy customization of policies for test intervals, retries, and thresholds and alerts.

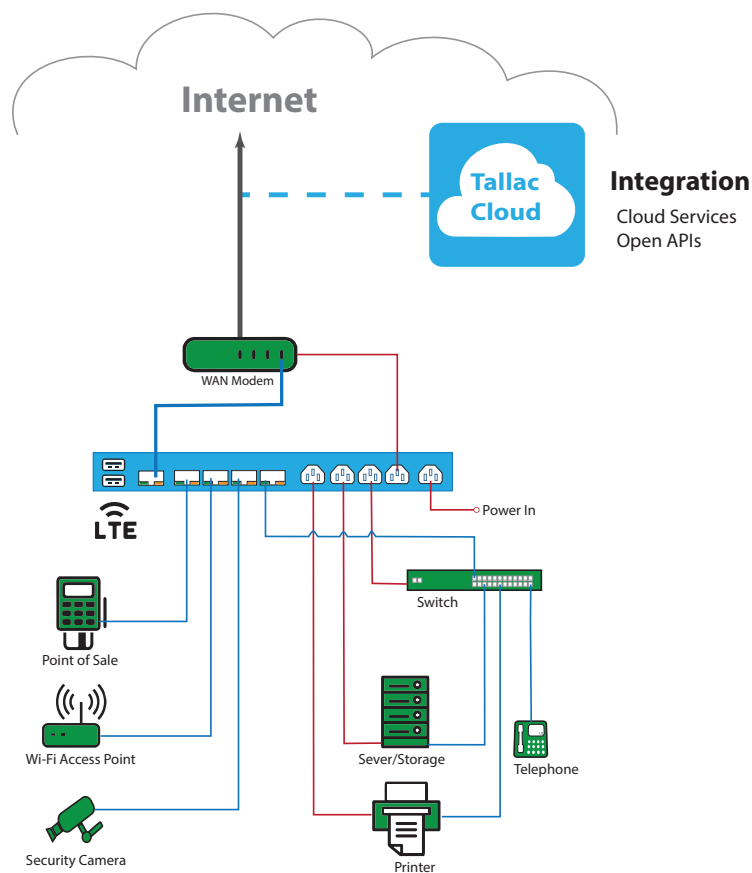
Discovery To enable discovery select the actions gear wheel on the upper right of the device view and “Enable Discovery”. The list of discovered clients is shown at the site level.

WAN/Internet Statistics – provides continuous monitoring of WAN/internet connectivity and provides WAN statistic reports and usage by client. Provides customizable time period snapshots for reporting by hour, day, week or month views.

Secure VPN Connectivity – allows you to establish a secure connection to the LAN allowing access to the local network, web UI, and console of any type of networked device.



Typical deployment SD-Branch Deployment



For more information please visit [Tallac.com/support](https://tallac.com/support) or if you need further assistance please contact Tallac support at support@tallac.com